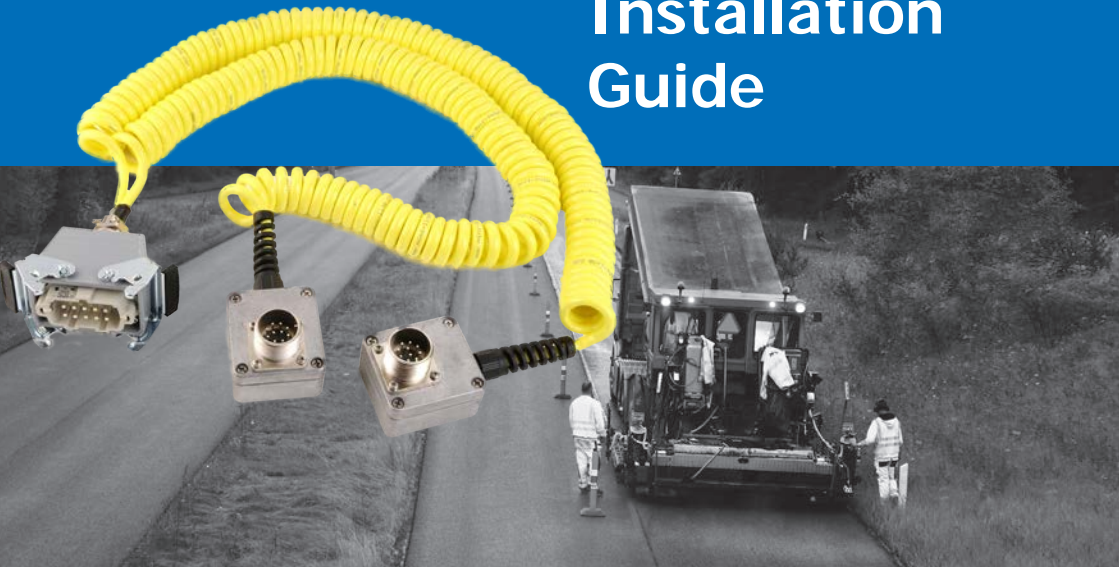


Mini-Line[®] Vögele Converter Kit

Installation Guide



Copyright

All information, text and pictures are the intellectual property of, and copyrighted material of TF-Technologies A/S. All rights are reserved. The installation guide may not be copied, displayed, quoted, published, sold, modified, or distributed without the written consent of TF-Technologies A/S.

Disclaimer

TF-Technologies A/S and its distributors may not be held liable for potential editorial errors, omissions or failure effects. Suggestions regarding updates or correction of potential errors are appreciated.

User manual information

Document name: Mini-Line® Vögele Converter Kit Installation Guide

Document number: G700703

Publication date: 5 March 2015

The Mini-Line® Vögele Converter Kit

The Mini-Line® Vögele Converter Kit is specially made to connect the Mini-Line® Grade and Slope Control System to Vögele asphalt pavers. The Vögele Converter Kit provides an interface between the Mini-Line® Grade and Slope Control System and a Vögele asphalt paver with a Harting connector for external leveling systems and PNP driven solenoid valves.

The Vögele Converter Kit enables connection of the Mini-Line® Grade and Slope Control System to Vögele asphalt pavers, by functioning as an adaptor cable as well as an interface that deactivates the regulation during the standby mode used by Vögele pavers.

When the Vögele Converter Kit is mounted, the Mini-Line® Grade and Slope Control System is easily connected to the adaptor boxes of the Vögele Converter Kit by using the standard V-cables or W-cables of the system or the Mini-Line® Connector Box.

Mini-Line® Vögele Converter Kit

S-50288



Consists of

- 1 Harting 10-pin rectangular connector (for connection to paver)
- 2x adaptor boxes with 10-pin plugs, one for the left and one for the right side of the paver, (for connection to the Mini-Line® Grade and Slope Control System)
- 2x4m coiled cables (when fully extended) connected to the adaptor boxes and the Harting connector

Additional Information

The Vögele Converter Kit is designed for use with the Mini-Line® Grade and Slope Control System.

General recommendations of the manual for the Mini-Line® Grade and Slope Control System should be observed for all additional subjects not covered in this installation guide, including:

- Safety instruction
- Safe mounting and connection with the Mini-Line® Grade and Slope Control System
- Information about overcurrent protection
- Maintenance

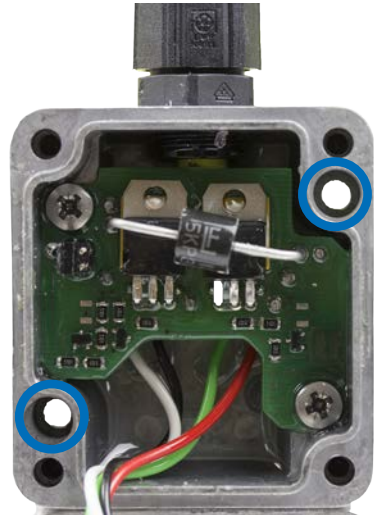
Mounting

The Vögele Converter Kit is designed for permanent mounting, and is resistant to corrosive substances and the tough environmental conditions on a paver.

The adaptor boxes should be placed where it is practical to reach while connecting the Mini-Line® Grade and Slope Control System, and where the cables are protected from clamping.

The adaptor boxes feature labels indicating which side (LEFT or RIGHT) of the screed they should be mounted in. Before mounting, the operator must ensure that the adaptor box with LEFT label is mounted in the left side and vice versa.

If mounted on the screed, protection against overextension and dragging is also needed.



Mounting Holes

Step-by-step instruction for permanent mounting

1.
2.
3.

- 1 Open the adaptor box**
Open the adaptor boxes by loosening the four screws on the front
- 2 Map the position**
Map the position of the two mounting holes shown on the picture above on the paver
- 3 Mount the adaptor box**
Mount the adaptor boxes on the paver with 4mm or 5/32 inch screws

Setting the Reception of the Standby Signal

When a Vögele asphalt paver is in standby mode, the paver sends a signal to the levelling equipment to deactivate regulation. The Vögele Converter Kit facilitates the reception of this signal in the Mini-Line® Grade and Slope Control System.

Normally, it is not necessary to change the setting for how the Vögele Converter Kit receives the standby signal as the factory setting should suit most Vögele pavers.

The default setting of the Vögele Converter Kit enables the regulation from the Mini-Line® Grade and Slope Control System, when the standby input is pulled high, and deactivates the regulation when the standby input is left floating.

If the paver uses a high output to deactivate the regulation, then change the settings to "Option 2" in both adaptor boxes.

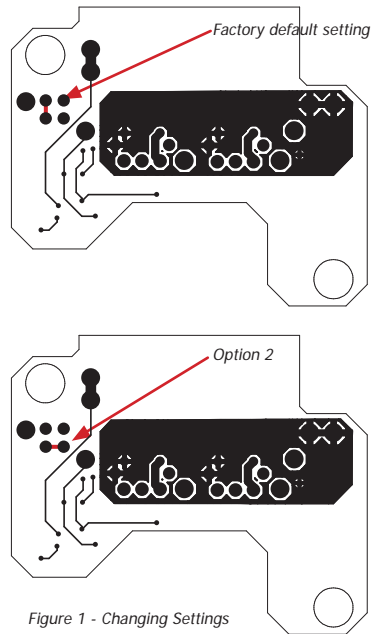


Figure 1 - Changing Settings

Step-by-step instruction for changing settings

1.
2.
3.

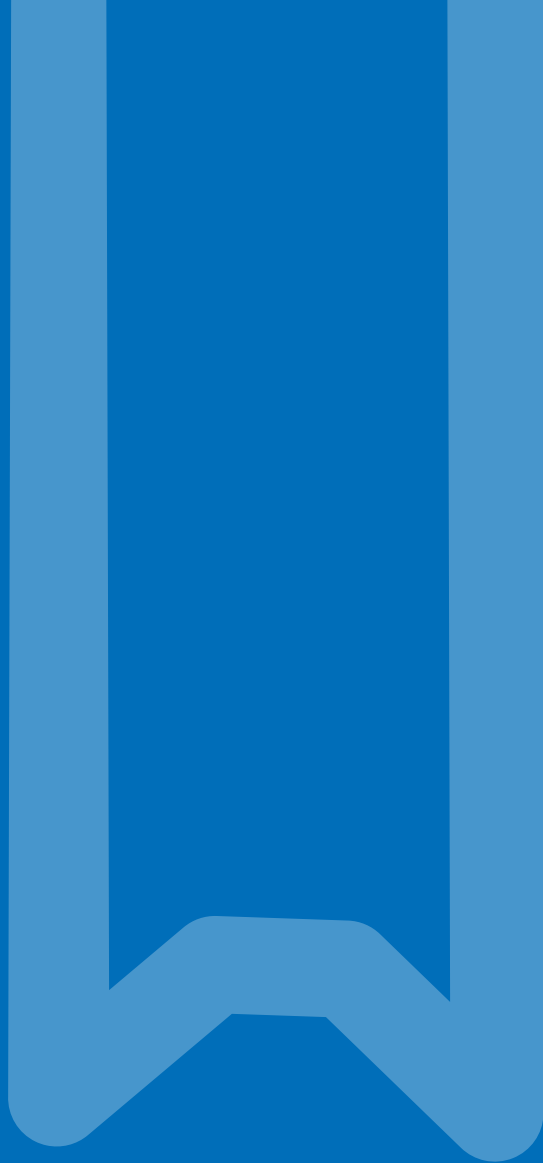
- 1 Open the adaptor box**
 Open the adaptor boxes by loosening the four screws on the front
- 2 Identify the location**
 Identify the location of the jumper in figure 1
- 3 Change settings**
 The setting can be changed by moving the jumper from the default setting to "Option 2"

Factory default setting



Option 2





tf TECHNOLOGIES
PAVING INNOVATION